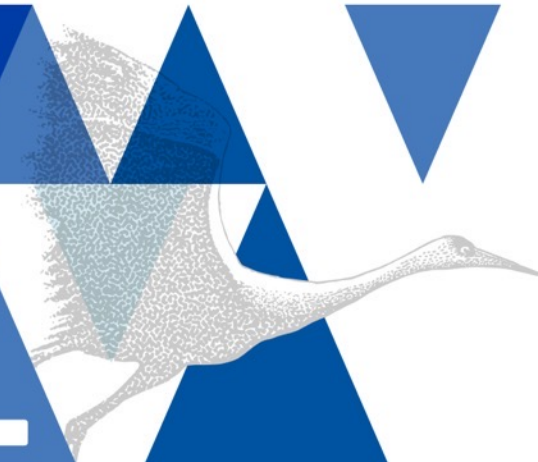


WELCOME!
CLIMATE JUSTICE
+ COMMUNITY
RESILIENCE



Driving Collaboration for a Sustainable Future

Thank you to our Planning Committee!

Beth Churchill

American Family Insurance Institute for Corporate
and Social Impact

Lizzie Condon

Wisconsin Academy of Sciences, Arts & Letters

Francisco Guerrero

Wisconsin Institute for Public Policy & Service

Pamela Guthman

Healthy Climate Wisconsin

Jess James

Wisconsin Academy of Sciences, Arts & Letters

Nyra Jordan

American Family Insurance Institute for Corporate
and Social Impact

Montre Moore

Wisconsin NAACP Environmental and Climate
Justice Committee

Deneine Powell

African American Alliance of CDFI CEOs





Acknowledgement

ZERO WASTE



AGENDA

JUNE 22

8:00 AM - 9:00 AM	Breakfast and networking time
9:00 AM - 11:45 AM	Atrium, Plenary sessions
11:45 AM - 1:00 PM	Lunch and networking time
1:00 PM - 1:30 PM	Atrium, Plenary session
1:30 PM - 3:00 PM	Education Center Levels 1, 2, and 3, Facilitated working groups I
3:00 PM - 3:30 PM	Break
3:30 PM - 5:00 PM	Education Center Levels 1, 2, and 3, Facilitated working groups II
5:30 PM - 7:30 PM	Atrium, Dinner and social time

JUNE 23

8:00 AM - 9:30 AM	Breakfast and networking time
8:30 AM - 9:00 AM	Atrium, Optional AmFam informational tour (meet near registration desk)
9:30 AM - 10:30 AM	Atrium, Plenary session
10:30 AM - 10:45 AM	Coffee break
10:45 AM - 12:15 PM	Education Center Levels 1, 2, and 3, Facilitated working groups III
12:15 PM - 1:15 PM	Lunch and networking time
1:15 PM - 1:45 PM	Atrium, Keynote address
1:45 PM - 2:45 PM	Atrium, Summit wrap-up and reflections

Things to Know Regarding the Summit Experience

The American Family Insurance Group Sustainable Business Strategy



Climate
Impacts and
Resiliency



Diversity,
Equity and
Inclusion



Responsible
Use of Data,
Artificial
Intelligence
and Innovation



Community
Advancement

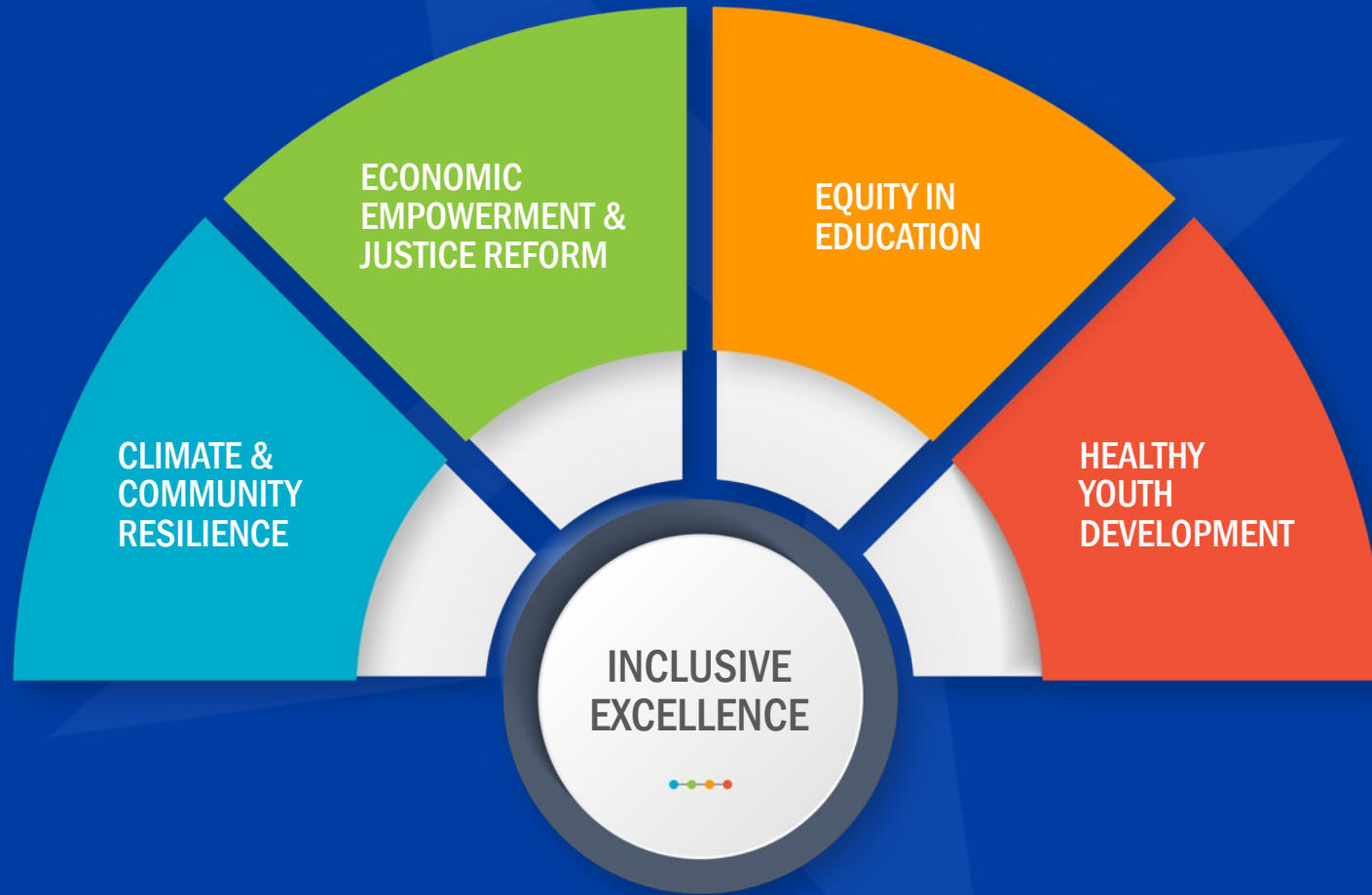
Who We Are

Our Legacy of Protection Dreams

Caring for our customers & communities during COVID - and beyond



Closing Equity Gaps in Communities



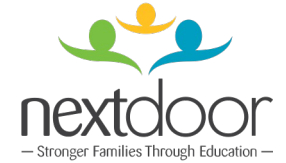
Why We Exist

Wisconsin Partnerships Spotlight



**StartingBlock
Madison**

DOYENNE
MADISON



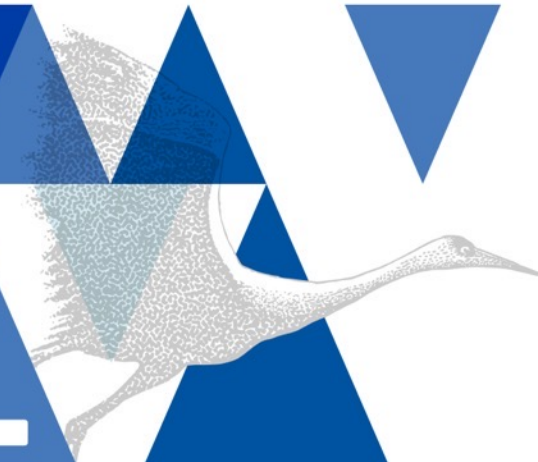
THE FOUNDATION FOR
BLACK WOMEN'S
WELLNESS

Why This Partnership is Important to Us

**WE CHAMPION DREAMS AND OPPORTUNITIES,
SO EVERYONE CAN RISE**

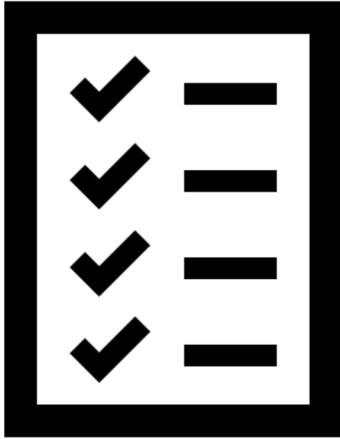
Our Call To Action

WELCOME!
CLIMATE JUSTICE
+ COMMUNITY
RESILIENCE



Today's Keynote Speaker

Introduction



- Wisconsin Climate Table–Community Commitments Campaign
- Tool Kit for Equity in Climate Action Planning
- Stories of Energy Burden and Climate Impact

Wisconsin Climate Table

WHAT WE ARE

- Network of 30+ organizations in Wisconsin
- North star goal of equitably eliminating GHG emissions by 2050
- Currently funded with a grant from the RE-AMP Network (reamp.org)

WHO WE ARE

- Organizations with expertise in renewable energy, environmental justice, interfaith organizing, grassroots organizing, public health, climate policy, and more
- Internal-facing organization

HOW WE WORK

- Strategic collaboration & collective knowledge
- Share resources & amplify strategies
- Develop tools & reports



<https://wisconsinclimatetable.org>

Community Commitments Campaign (CCC)

Formed to support localities passing climate resolutions



Released Local Government Clean Energy Tool Kit



Hired Keviea Guiden to do grassroots organizing in MKE/SE Wisconsin



2022-2023

Developed tool kit for equity in local climate action planning

Uplifted role of local governments in Gov's Climate Change Task Force

Tool Kit for Equity & Justice in Climate Action Planning

WCT CCC members involved in Tool Kit development

1000 Friends of Wisconsin

350 Wisconsin

Citizen Action of Wisconsin

Clean Wisconsin

Elevate

RENEW Wisconsin

Waukesha County Green Team

Wisconsin Health Professionals for Climate Action



Wisconsin Local Government Climate Coalition (WLGCC)

Dane County, City of La Crosse, City of Sun Prairie gave us feedback on the tool as well.

What is the purpose of the tool kit?



The Tool Kit is a Wisconsin-specific guide to braiding equity into climate policies, plans, and programs at the local level. It is intended for municipal staff, policy makers, and advocates.

- **Ensure equity is a focal point** of local climate planning regardless of size, demographics, geography or resources.
- **Support communities** at all stages of climate readiness.
- **Create a Community of Practice** for Wisconsin municipalities around equitable climate planning.
- **Prepare for funding** opportunities (IIJA/IRA).
- **Create a living tool** that will continue to feature the good work of Wisconsin's communities.

How did we approach equity in the tool kit?

- **Prioritize historically marginalized and frontline communities:** maximize benefits and minimize further harms.
- **Use a broad lens:** processes & participation, distribution of benefits, and historical & structural barriers.
- **Address intersectionality:** marginalized communities often experience climate impacts in multiple ways that are compounded.
- **Connect** lived experiences with policy.



Energy burden & climate impacts in SE Wisconsin: Connecting lived experience with climate change



Next Steps

- Feedback survey: <https://forms.gle/5dCXrrAErtNwu3g76>
- Connecting with collaborators to share resources
- Bring us YOUR stories of impact!
- Bring us YOUR climate and equity success stories!

Contact the WCT Coordinator at susan@1kfriends.org

<https://wisconsinclimatetable.org>

<https://wisconsinclimatetable.org/equity-in-climate-action-planning-tool-kit/>

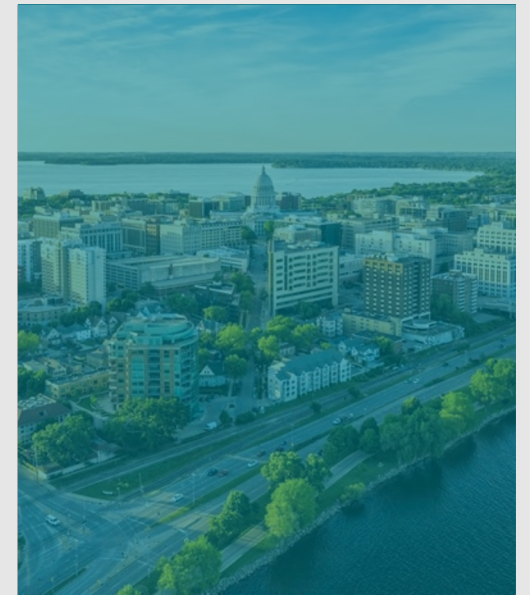
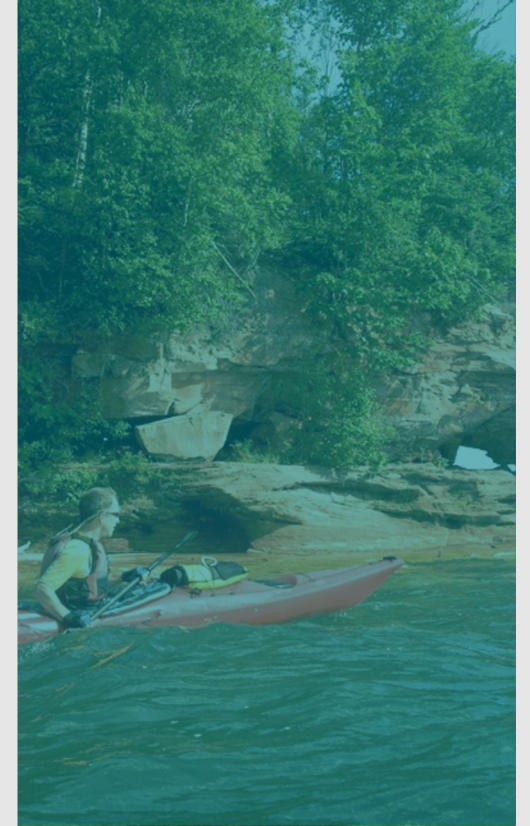


Clean Economy by 2050

Vision and 2023 Policy Agenda

Introduction for partners to the
Clean Economy Coalition of Wisconsin

June 2023





Clean Economy Coalition of Wisconsin

Coalition Vision and Purpose



Origins of the Coalition

We are still on the ground floor

Our Shared Vision: Clean Economy by 2050

The **Clean Economy Coalition of Wisconsin** is a group of climate, energy, environmental justice and conservation organizations, businesses and allies.

The Coalition **leverages the combined strength of its members** to enhance the quality of life for all Wisconsinites by accelerating the state's transformation to a clean energy economy.

We believe that an **economy-wide approach to decarbonization will take our state further, faster – with better outcomes for us all.**

We **champion people-first policies that create jobs for Wisconsin workers, build healthier communities and protect our natural resources.** By working together, we advocate for clean energy-solutions that work for all of Wisconsin's diverse cultures, communities and geographies.

We're here to meet the moment. While work to conserve our state's rich natural resources and create clean energy solutions has been long-championed by many, we've reached an inflection point. It's time for us to come together and work as one, to ensure the state we love - and all of its traditions - can be passed to future generations.





Our Values as a Coalition

- Our mission is to create welcoming and dynamic spaces for organizations to collaborate and drive our state's future toward a clean economy.
- We understand that a truly just transition requires a systemic overhaul of the economy in Wisconsin, which is why we have centered racial and economic justice as a fundamental principle of our work.
- Achieving a clean economy will require movement at all levels of government, in all corners of the state, and with mobilization of many communities and organizations – some of whom have been historically excluded from key opportunities while bearing the brunt of the consequences of previous decisions.
- The Coalition is working to build a new legacy worthy of Wisconsin's proud traditions: cohesive, nonpartisan and cross-sector convening power to define the future for our state.

Defining Our Purpose



The time is now

We're here to meet the moment. While work to conserve our state's rich natural resources and create clean energy solutions has been long-championed by many, we've reached an inflection point.



This work isn't new, but our collective power is

While work to protect our state's rich natural resources and create clean energy solutions has been long-championed by many, we've reached an inflection point.



People are at the center of our policy initiatives

We aim to advocate for the best possible policies at the local, state, and federal levels, and advance our vision of a clean economy in all communities across our state.



Our policy pillars will help us define and achieve a clean economy

The Coalition has agreed to six policy pillars - each with its own goals and initiatives:

- Healthy economy
- Environmental justice and infrastructure
- Carbon-free power
- Next-gen transportation
- Clean homes and buildings
- Thriving landscapes



How we work as a Coalition

- The Clean Economy Coalition of Wisconsin sets annual strategic goals around six core policy pillars.
- With coordinated guidance from an **interim steering committee**, its members are self-organized by mission, priority and strengths into working groups, often with a lead partner who serves as the convener.
- Lead partners provide administrative / planning support and report out updates and actionable items to the full Coalition during monthly all-member calls.
- Consultants to the CECW are contracted by the Energy Foundation to provide support for the coalition and the foundation's grantees.
 - Melika Edquist, Wisconsin State Director
 - Dan Ebert: Policy & Federal Lead
 - Antonio Butts, Climate Justice Lead
 - Mueller Communications, Comms Lead
 - Thomas Moore, Government Affairs Lead

Six Policy Pillars for a Clean Economy



CLEAN HOMES AND BUILDINGS

- **Transform the building sector by focusing on emissions and equity.**
- 100% zero carbon new residential and commercial buildings and reduce building sector emissions by 50% by 2030
- We will work to phase out use of natural gas in existing homes and businesses, to prioritize retrofitting and weatherization, and to reduce energy burden on households who can least afford it



CARBON FREE POWER

- **100% carbon-free state by 2050 - at the latest**
- Increased access to clean power
- Protect ratepayers from undue increases and to advocate for energy efficiency programs that enable smart and economical consumer choices
- Urge WI utilities to retire coal plants and reduce reliance on natural gas by 2030, with no new oil or gas infrastructure in the state



HEALTHY ECONOMY

- **Ensure that households' health, jobs, and choices for tomorrow are better than today** through the opportunities created in the transition to a clean economy
- Comprehensive, economy-wide approach to our carbon-free future, we can both drive smart growth in our economy for Wisconsin's workers and industries while delivering lasting savings in efficiency and improved health outcomes for Wisconsin families.

Six Policy Pillars for a Clean Economy



ENVIRONMENTAL JUSTICE

- Bridge the lived experiences of climate and energy consequences and the arenas where policy decisions are made
- Engaging climate justice communities and organizations to **ensure equity is at the forefront of coalition-wide work**, while developing strategies that help communities address home repair, workforce development, and other key issues that are affecting many across our state



NEXT GENERATION TRANSPORTATION

- **Ease the road for the transition to electric and low-carbon transportation**
- Make the transition to electric vehicles cost effective, easy and equitable, so over 50% of new sales are electric by 2030
- Equitable, reduced-carbon transit options for regional travel and within communities to ensure that equitable mobility options become the norm and that new transit infrastructure meets the needs of our moment



THRIVING LANDSCAPES

- **Build the health and resiliency of our state across WI's diverse natural, working and built landscapes**
- We understand that all of Wisconsin's residents rely upon our shared land, air, and water, yet *some* Wisconsinites are disproportionately more affected by adverse effects to those resources than others.
- Supporting conservation, advance emerging renewable resources and natural climate solutions like climate-smart agricultural practices.



Structure and Governance

Working Groups, Committees,
and growth at the speed of trust

Ways to be Involved

- ✓ **Monthly CECW Call**
- ✓ **Action-oriented Committees**
- ✓ **Policy- oriented Working Groups**
- ✓ **Joint work (campaigns, organizing, events)**
- ✓ **Annual Strategic Planning**
- ✓ **Leadership opportunities**

Clean Economy Coalition of Wisconsin

Organizational Structure - April 2023

Consultants
Facilitator: Melika Edquist State Director

Consultants
 Melika Edquist, Radical Hospitality
 Antonio Butts, Walnut Way
 Dan Ebert, The Ebert Group
 James Madlum, Elizabeth Hummitsch, Cass Bergman, Mueller Communications
 Thomas Moore, TMGA

10-15 Member Steering Committee
Interim as of July 2022; To be elected by December 2023

Steering Committee Representation
 TBD - drawn from Working Groups, Committees Affiliated Efforts

Clean Economy Coalition of Wisconsin
*Open Membership; Monthly Call
 Facilitator: Melika Edquist*

Affiliated Efforts
Closed membership, closely coordinated efforts

Wisconsin Local Government Climate Coalition

Business Table

Initiatives & Campaigns
On ramps to the coalition through coordinated re-granting

Environmental Justice & Infrastructure Initiative

Federal Opportunity Navigator Campaign

Working Groups
*Policy and Thematic Work
 Open Membership*

PSCW

Building Decarb

Climate & Health

Environmental Justice

Local Action:

EVs & Transportation

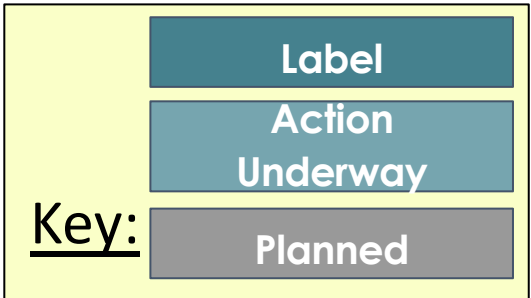
Natural Solutions

Workforce Development

Committees
*Affinity Professional Working Groups
 By Agreement*

Communications

Legislative Committee



CLEAN ECONOMY COALITION OF WISCONSIN

*Open Attendance, Meets Monthly
Facilitator: Melika Edquist*

Working Groups

All Subcommittees: open attendance, meet as needed, various facilitators.

Underway/ to launch in 2023

PSCW

*Monthly meeting
Facilitator: Dan Ebert
Lead Partner: RENEW, CUB*

LOCAL ACTION

*Monthly meeting
Facilitator: Dan Ebert
Lead Partner: WCV, WLGCC*

EV & Transportation

*Monthly meeting
Facilitator: Francisco Sayu
Lead Partners: Renew*

Climate & Health

*By Invitation
Facilitator: Abby Novinska-Lois
Lead Partner: WHPCA*

Building Decarbonization

*Facilitator: _____
Lead Partner: Clean Wisconsin*

Environmental Justice

*Facilitator: Bryan Rodgers
Lead partner: Walnut Way*

Natural Climate Solutions

*Facilitator: Kata Young, Christina Anderson
Lead Partners: CW, WLW, TNC*

Workforce Development/ Just Transition

*Monthly Meeting
Facilitator: TBD
Lead partner: TBD*

Legacy Policy Tables - For Coordination

Energy Burden Working Group

Facilitator: Sierra Club

Building Codes Coalition

Facilitator: 350 Madison

Our Future Milwaukee

Coalition for More Responsible Transportation

Facilitator: Sierra Club, 1000 Friends of WI

Climate Fast Forward

Facilitator: WI Academy of Arts & Sciences

MKE EJ Roundtable

Facilitator: MKE Water Commons

Wisconsin Climate Table

IIJA Working Group

Facilitator: WCV



Thank you.

The work has just begun!

Loka लोकः

UNIVERSITY OF WISCONSIN-MADISON



Climate Justice and Community Resilience Summit
June 21-23, 2023



Loka's Vision:

Inner, Community, and Planetary Resilience are Interdependent. We cannot achieve any one of these without working on the other two.





MISSION: To support faith-led efforts locally and around the world through collaborations on capacity building, project design, and public outreach with faith leaders, culture keepers of indigenous traditions, and religious institutions working on environmental protection, sustainability, and climate change.

Loka's Activity Streams

CAPACITY BUILDING:

Convene, organize, and build networks that help communities of faith to design and build their own environmental and climate efforts

RESEARCH & RESOURCE DEVELOPMENT:

Lead interdisciplinary research and develop resources to address eco-anxiety, climate distress, and solastalgia

PUBLIC ENGAGEMENT & OUTREACH:

Engage, inspire, involve the public by bringing the forces of religion and science together on environmental and climate solutions





SCAN ME

Creation at the Crossroads



SACRED WISDOM, SACRED EARTH

CENTERING INDIGENOUS KNOWLEDGE FOR FUTURE
GENERATIONS



Sacred Wisdom, Sacred Earth Day Two ...



Watch later



Share



Sacred Wisdom, Sacred Earth Day Two ...



Watch later



Share



Menpa Phuntsok Wangmo, Shangshung
Institute of Tibetan Medicine



Jessica Hernandez, Author
Maya Ch'orti/ Zapotec



Maria Montejo, Teacher
Jakaltepec/Popti



Chairman Mike Wiggins Jr,
Band River Tribe

“Indigenous resilience is rooting ourselves in the strength of our ancestors and reaching for the generations that will come in the future. It is ensuring that there is a path to bring all of our lost ones home.”

Elder Janice Rice,
Ho-Chunk Nation





SCAN ME

[Documentary](#)

BHUMISPARSHA

Loka लोकः
UNIVERSITY OF WISCONSIN-MADISON

HOW BUDDHISM AND ENVIRONMENTAL JUSTICE CONVERGE



LAMA ROD
OWENS



REPA JUSTIN
VON BUJDOSS



DEKILA
CHUNGYALPA

CENTER FOR HEALTHY MINDS
625 W WASHINGTON AVE
MADISON, WI 53703

07.09.23 | 1:30 PM

Center for
healthyminds
UNIVERSITY OF WISCONSIN-MADISON



Tergar

A lush green forest with a large rock in the center. The trees are tall and thin, with dense foliage. The ground is covered in grass and small plants. The overall scene is vibrant and natural.

Loka लोकः

UNIVERSITY OF WISCONSIN-MADISON

Resilience In The Anthropocene
The RITA Project

What Is the Anthropocene?



THINK - PAIR - SHARE



1. What is something you know about climate change?
1. How does that make you feel?

Eco-Anxiety, Climate Distress, Solastalgia, and more

Ecoanxiety = “the chronic fear of environmental cataclysm that comes from observing the seemingly irrevocable impact of climate change and the associated concern for one's future and that of next generations” (APA)

Climate Distress = “Pain for the world” (Joanna Macy), “ecological grief” (Ashlee Cunsulo), “existential distress” (psychosocial and palliative care)

Solastalgia = “the distress that is produced by environmental change impacting on people while they are directly connected to their home environment” (Glenn Albrecht)

What about other emotions?

THINK - PAIR - SHARE



3. What do you do with that emotion(s)?

What Is Resilience?



PSYCHOLOGY: The process of adapting well in the face of trauma, tragedy, threats or significant sources of stress. Our ability to bounce back from adversity and it does not imply that we will be as we were.

SOCIOLOGY: Human society's ability to adapt to changing circumstances so that we can survive with our most valued collective norms, behavior and knowledge systems intact.

ECOLOGY: The capacity of an ecosystem to respond to a disturbance by being able to resist damage and recover quickly.



Resilience In The Anthropocene

3 Days | 3 Keynotes | 9 panels | 3
Contemplative Practices

WELCOME TO THE ONLINE
RITA SUMMIT

August 8-12, 2023

www.ritasummit.org

Mindfulness - Gratitude



AGENDA

JUNE 22

8:00 AM - 9:00 AM	Atrium, Breakfast and networking time
9:00 AM - 11:45 AM	Atrium, Plenary session
11:45 AM - 1:00 PM	Education Center Level 1, Lunch and networking time
1:00 PM - 1:30 PM	Atrium, Plenary session
1:30 PM - 3:00 PM	Education Center Levels 1, 2, and 3, Facilitated working groups I
3:00 PM - 3:30 PM	Atrium, Break/mindfulness activity
3:30 PM - 5:00 PM	Education Center Levels 1, 2, and 3, Facilitated working groups II
5:30 PM - 7:30 PM	Atrium, Dinner and social time

AGENDA

JUNE 23

8:00 AM - 9:30 AM

Atrium, Breakfast and networking time, optional AmFam site tour (Tour 8:30-9:15 am) hosted by AmFam and AmFam Institute Team Members

9:30 AM - 10:30 AM

Atrium, Plenary session

10:30 AM - 10:45 AM

Atrium, Coffee break

10:45 AM - 12:15 PM

Education Center Levels 1, 2, and 3,
Facilitated working groups III

12:15 PM - 1:15 PM

Atrium, Lunch and networking time

1:15 PM - 1:45 PM

Atrium, Keynote on rural resiliency

1:45 PM - 2:45 PM

Atrium, Summit wrap-up and reflections on key learnings, closing remarks by the Summit organizers

2022

CLIMATE FAST FORWARD

ACCELERATING
TRANSFORMATIONAL CHANGE

The Climate Fast Forward Workplan

- Track leaders worked together to create background papers (before the conference)
- Facilitated sessions at the conference (during the conference)
- Transcription and interpretation of flip charts and CAR models (October-November 2022)
- Report writing (October 2022 - January 2023)
- Statewide launch (March 2023)
- Regional meetings (June 2023 – October 2024)

TRACK

1

**The Built
Environment**

TRACK

2

**Natural &
Working
Landscapes**

TRACK

3

**Climate Justice
& Community
Resilience**

TRACK

4

**Green Jobs & the
New Economy**

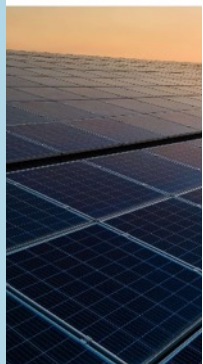
TRACK

5

**Traditional
Perspectives on
the Environment**



STATE OF WISCONSIN
CLEAN ENERGY



Prepared by the Wisconsin Office
Slipstream, Inc.

April 2022
Version 1.0



MONONA TERRACE MADISON
OCT 17 2022



Built Environment Track Background Paper

Leaders: [Anna Haines](#) (College of Natural Resources at the University of Wisconsin - Stevens Point), [Nick Hylla](#) (Midwest Renewable Energy Association), [Gregg May](#) (1000 Friends of Wisconsin)

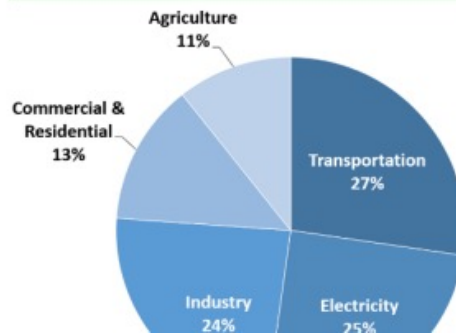
Overview

This track focuses on the built environment – a broad topic that encompasses land use and development, transportation issues, and renewable energy within urban and rural areas.

The built environment “touches all aspects of our lives, encompassing the buildings we live in, the distribution systems that provide us with water and electricity, and the roads, bridges, and transportation systems we use to get from place to place. It can generally be described as the man-made or modified structures that provide people with living, working, and recreational spaces. Creating all these spaces and systems requires enormous quantities of materials.” ([Basic Information about the Built Environment | US EPA](#)).

Because the built environment is broad, it is an enormous contributor of greenhouse gas emissions. The chart below ([Sources of Greenhouse Gas Emissions | US EPA](#)) shows GHG emissions by economic sector. Only agriculture under our definition of the built environment does not apply.

Total U.S. Greenhouse Gas Emissions
by Economic Sector in 2020

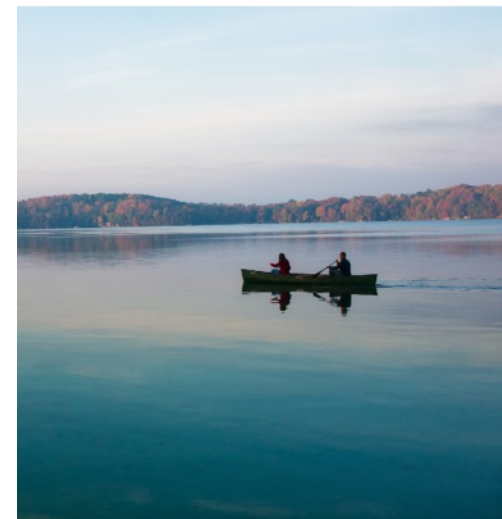


Planning researchers and practitioners have been addressing the built environment and thinking about its environmental and climate footprint for many years. One overarching strategy to create more equitable, sustainable, and livable communities is through smart growth policies. Smart growth policies include higher density housing, smaller home sizes, more public spaces, and increased use of public transit. In addition, adequate green spaces, walkability and design of urban form have



ORCE ON

CHANGE REPORT



ISCONSIN. DECEMBER 2020.





Achievable

Impactful

Equitable





How should we use this plan?

- Set priorities
- Increase collaboration
- Leverage funding
- Take leadership



142 recommended actions

36 priority actions

64 first steps

9 champions

**13 actions in need
of a champion**

Themes

- We need to coordinate and collaborate more
 - Climate Justice Coalition
 - Natural Climate Solutions Task Force
 - Consortium for energy-efficient housing
 - Strengthening of relationships and understanding between Tribal Nations and federal, state, county, and municipal governments
- We need to fund climate change actions

Goal 1: Create a Climate Coalition of Wisconsin.

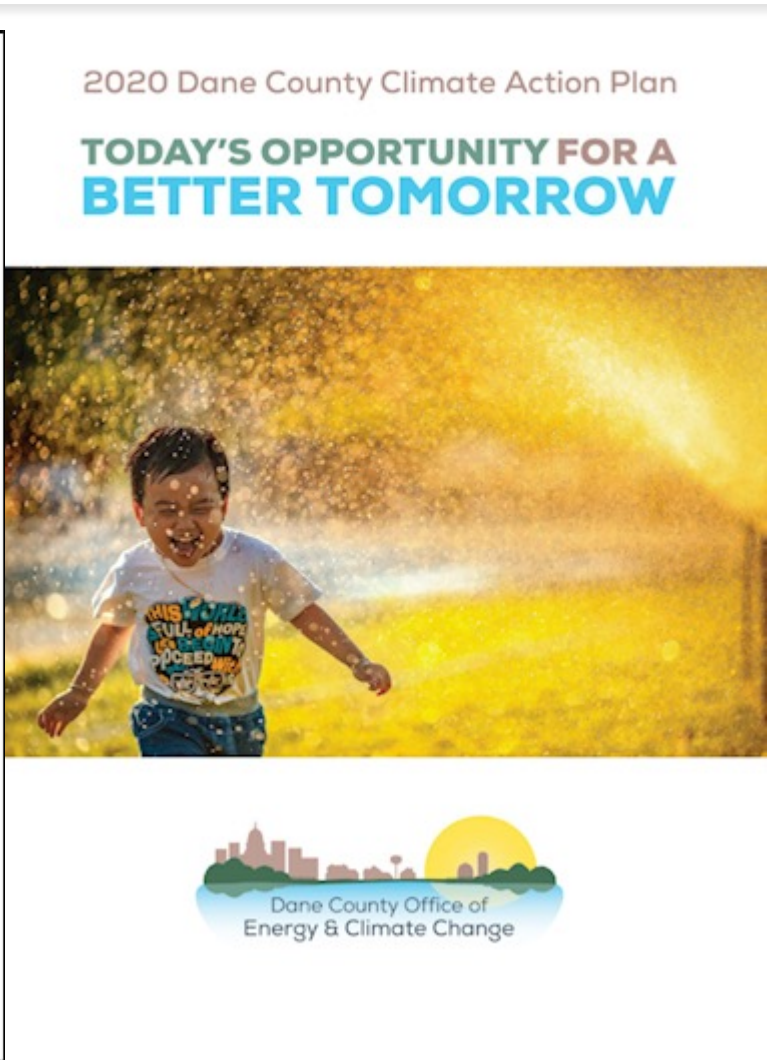
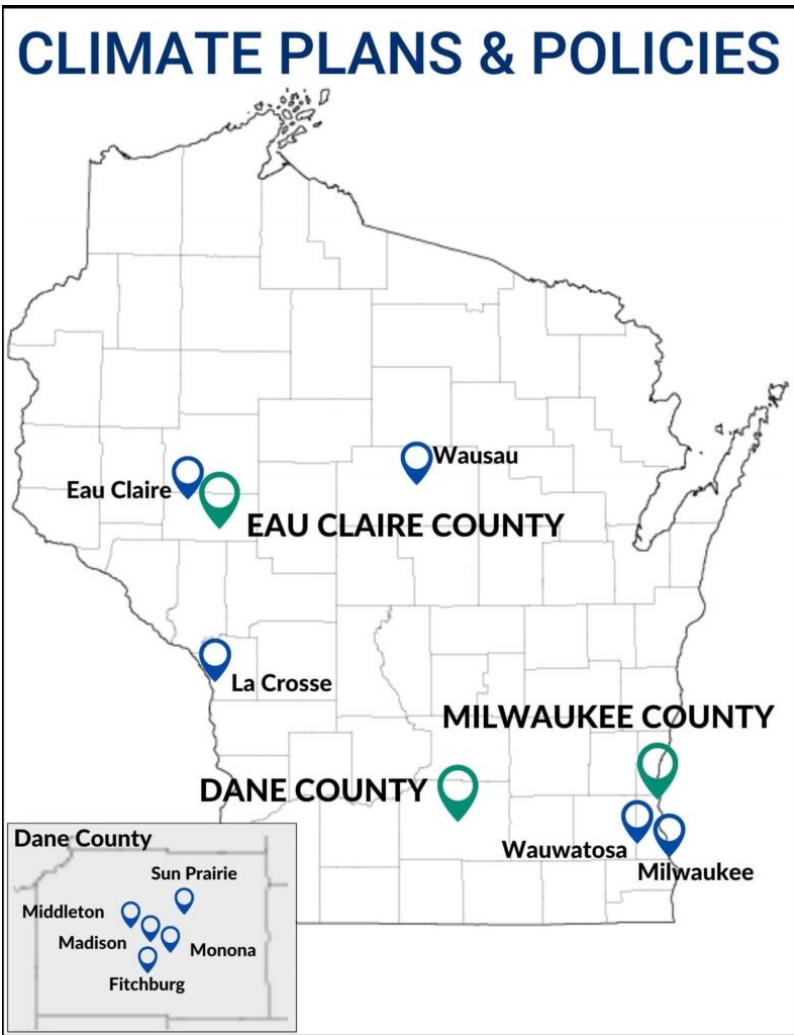
Action 1A: Coordinate the ongoing efforts of the Wisconsin Environmental Justice and Infrastructure Initiative (WEJII), clean energy organizations, and other organizations and partnerships.



Goal 2: Develop climate action plans in communities across the state.

Action 2A: Integrate climate action planning into existing planning processes and ensure equity in all processes.

35 climate and sustainability plans in Wisconsin (October 2022)



Goal 3: Ensure equity and just transition in climate solutions.

Action 3A: Provide resources for leaders (money, training, and leadership development) and help frontline organizations advocate for racial justice.

Goal 4: Create or establish local climate and environmental justice groups and connect with other groups to work towards collective impact.

Action 4A: Bring in community leaders/champions (bridgers) to serve as ambassadors to their communities.

Goal 5: Increase community awareness of climate solutions.

Action 5A: Build relationships and trust by highlighting examples of successful climate change solutions in Wisconsin communities.





CLIMATE JUSTICE

**+ COMMUNITY
RESILIENCE**



**WISCONSIN
ACADEMY**
OF SCIENCES,
ARTS & LETTERS



**AMERICAN FAMILY INSURANCE
INSTITUTE**
FOR CORPORATE AND SOCIAL IMPACT



Do you need travel reimbursement for the Summit?

If you want reimbursement for mileage, you can fill out a paper form at the Summit, or you can fill out a Google Form at the QR code to the left by **June 25th**.

If you drove a rental car, keep your fuel and rental car receipts and submit them via the Google Form at the QR code to the left by **June 25th**.

If you have questions, email jjames@wisconsinacademy.org.





**WISCONSIN
ACADEMY**
OF SCIENCES,
ARTS & LETTERS

*IDEAS
that move the world
FORWARD*