



# Property Assessed Clean Energy (PACE) PACE 2.0 – PACE Wisconsin Overview

## PANEL

**Allen Buechel** - Fond du Lac County Executive

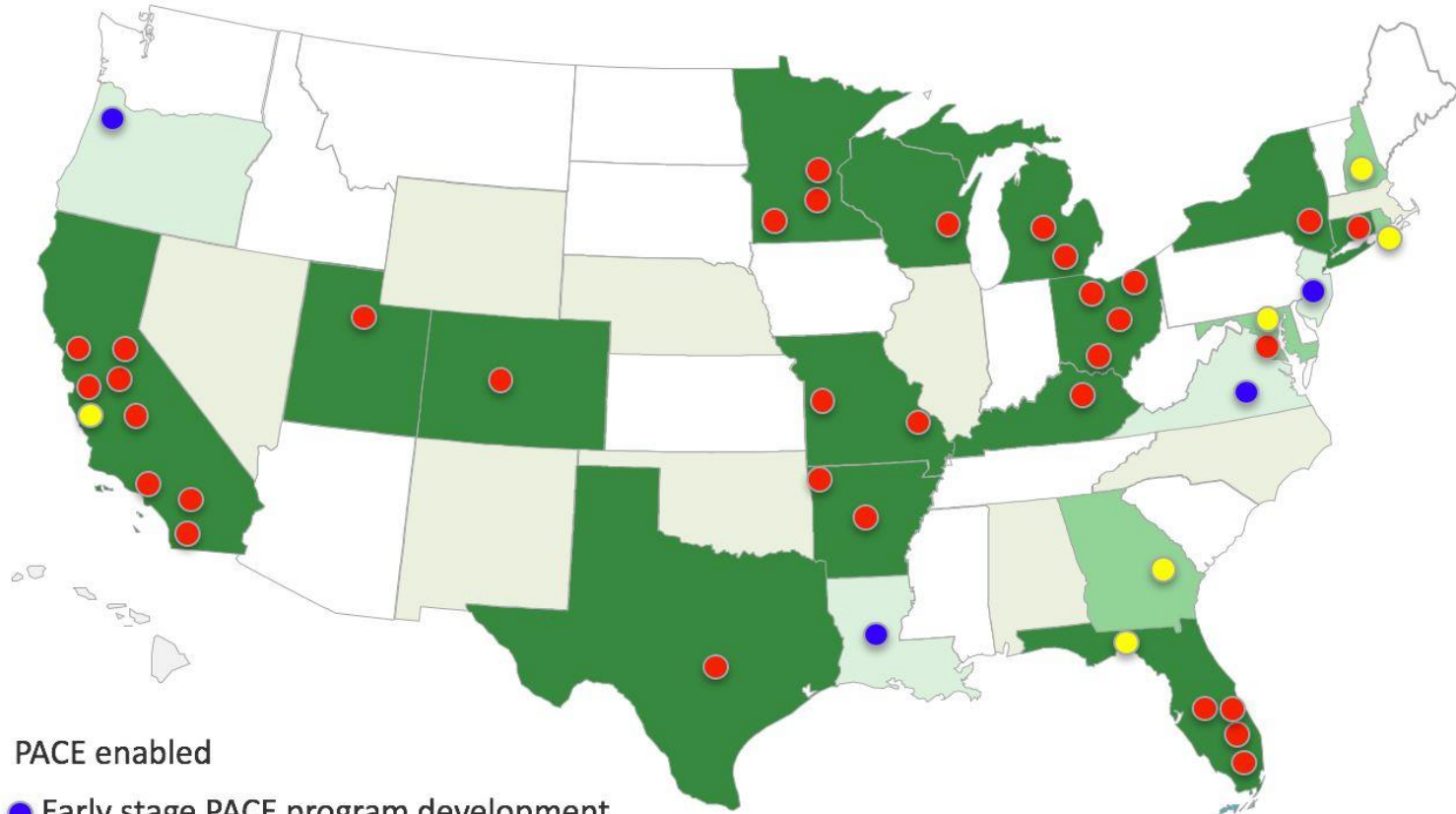
**Jon Hochkammer** - Outreach Manager, WI Counties Assoc.

**Erick Shambarger** - Director of Environmental Sustainability at  
the City of Milwaukee

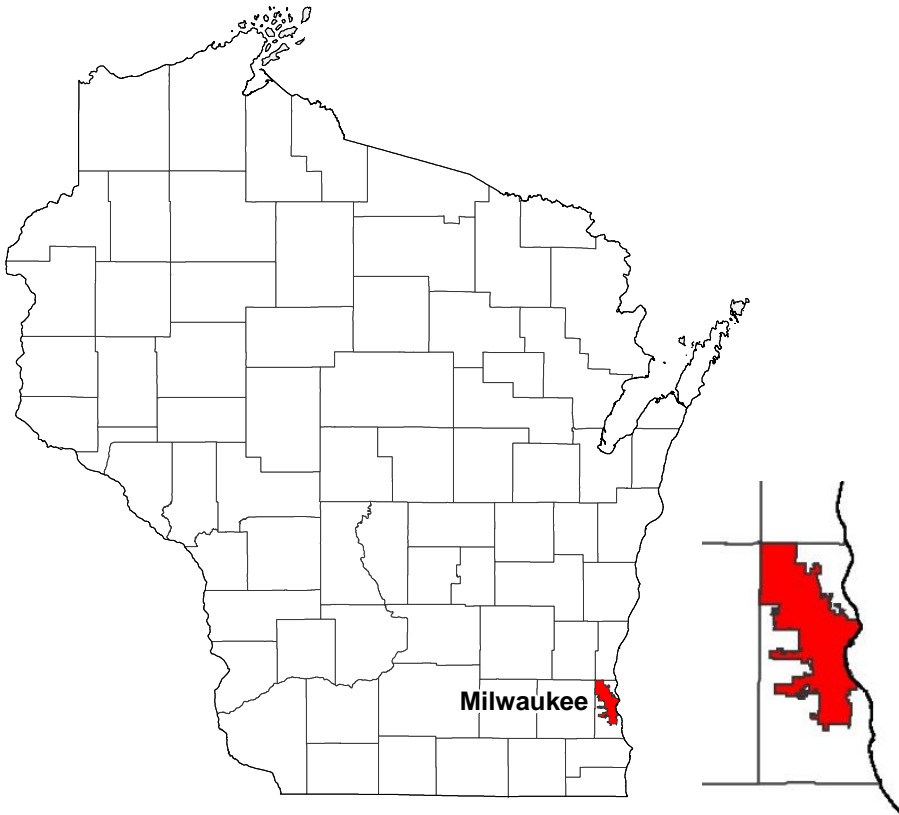
## Moderator

**Jason Stringer** - Senior Manager Clean Energy Finance, WECC

1040 Projects - \$340 M - 4,000 Jobs



# Me2 - City of Milwaukee






# Partnership






- [Home](#)
- [About Us](#)
- [Property Owners](#)
- [Local Governments](#)
- [Lenders](#)
- [Contractors](#)
- [Project Center](#)



PROPERTY OWNERS



LOCAL GOVERNMENT



LENDERS

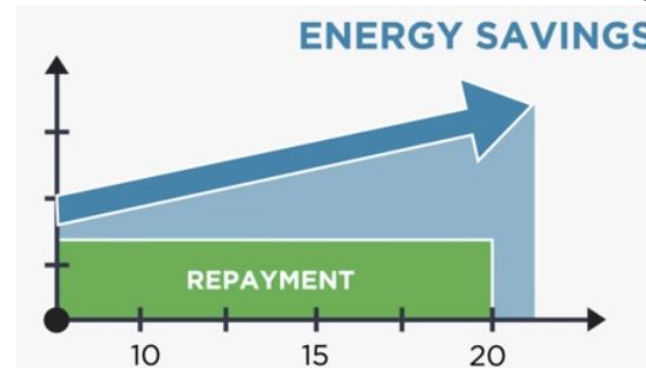


CONTRACTORS



Assists local businesses with financing

- Renewable energy
- Energy efficiency
- Water conservation

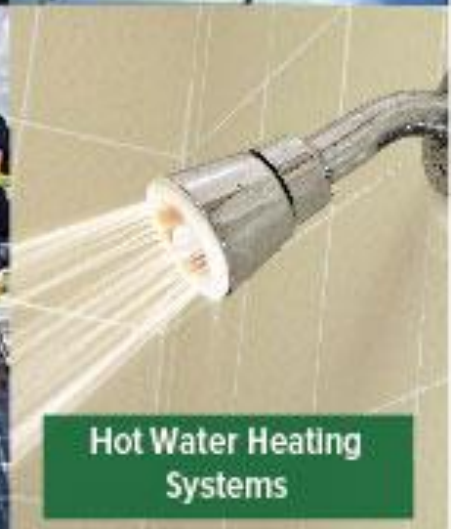
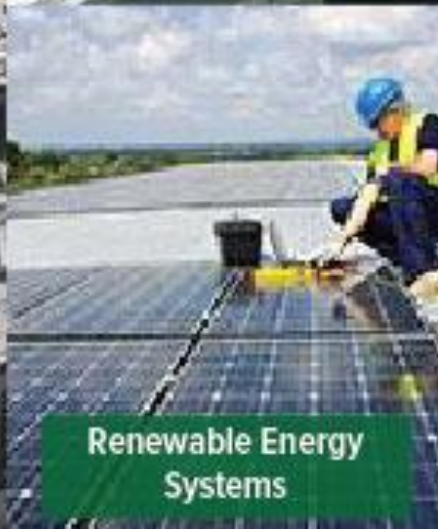
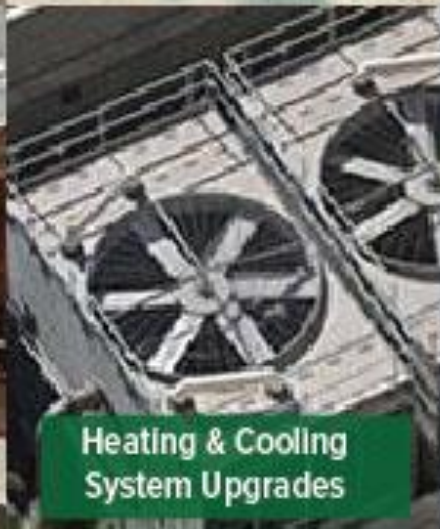
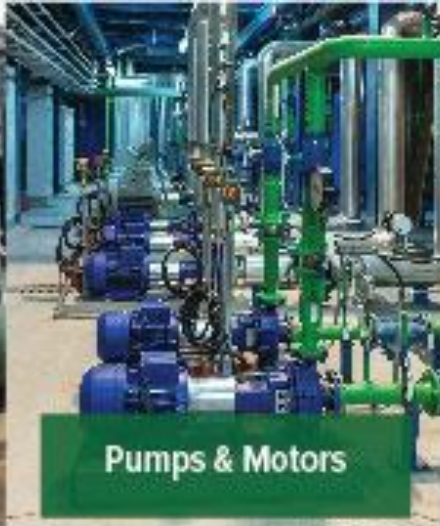
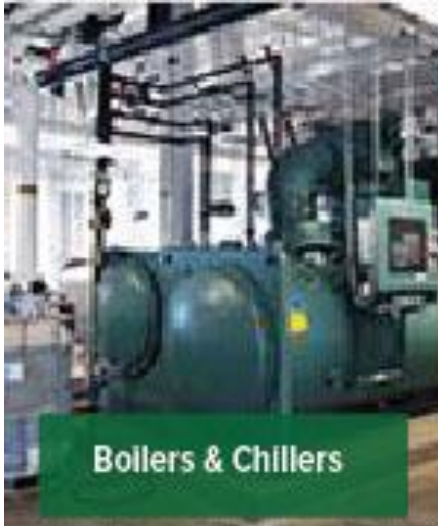


Enabled by State of Wisconsin  
Legislation (Section 66.0627)



It's a loan secured by a special charge

# Eligible Improvements



# Eligible PACE Projects

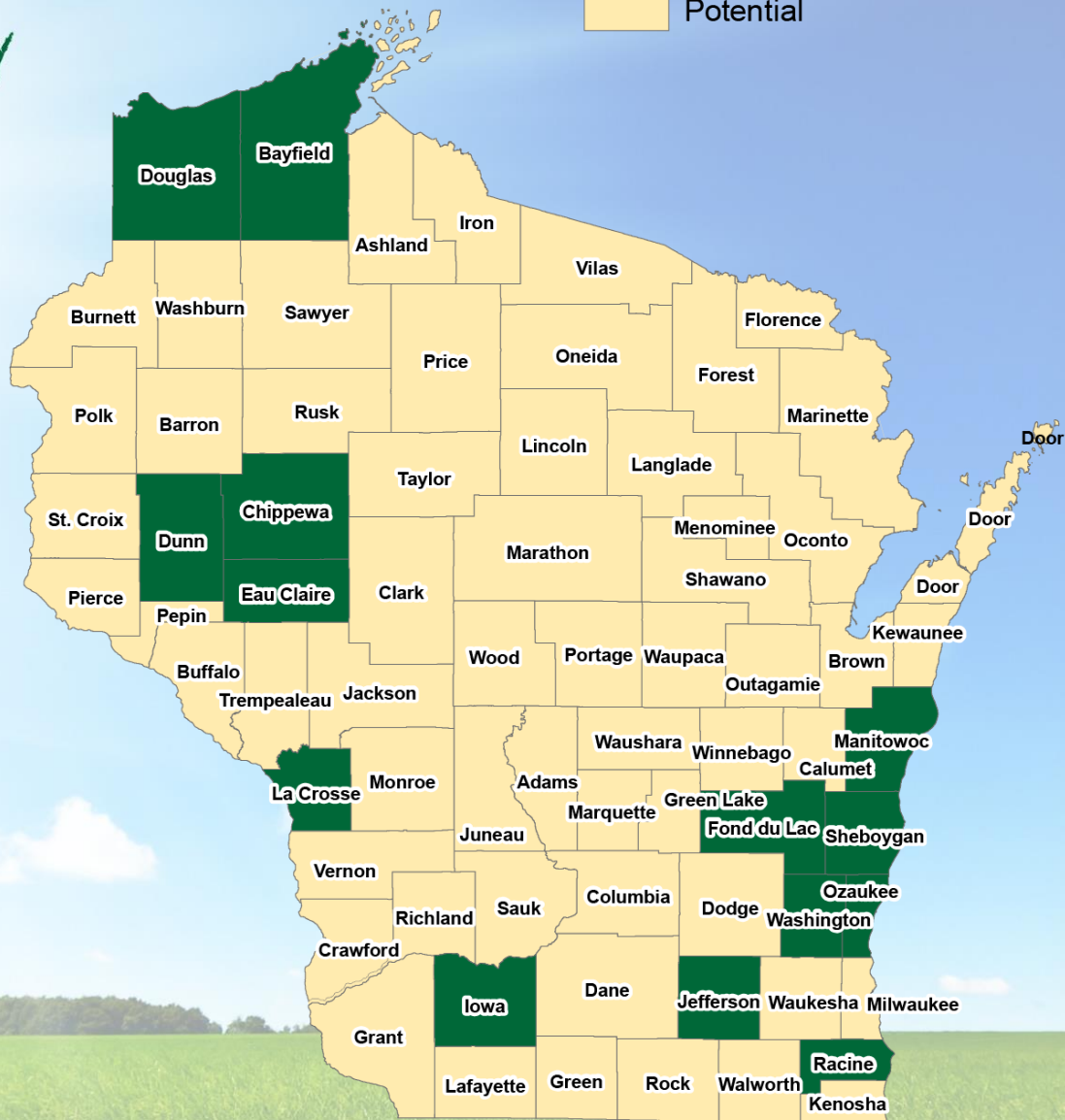


|  |  |  |  |
|--|--|--|--|
| <br><b>COMMERCIAL</b><br>(Office Building and Retail) | <br><b>MULTIFAMILY</b> | <br><b>NON-PROFIT</b>                     | <br><b>AGRICULTURE</b>  |
| <br><b>WAREHOUSING</b>                               | <br><b>HOSPITALS</b>  | <br><b>INDUSTRIAL/<br/>MANUFACTURING</b> | <br><b>HOSPITALITY</b> |





## WI PACE Commission Status



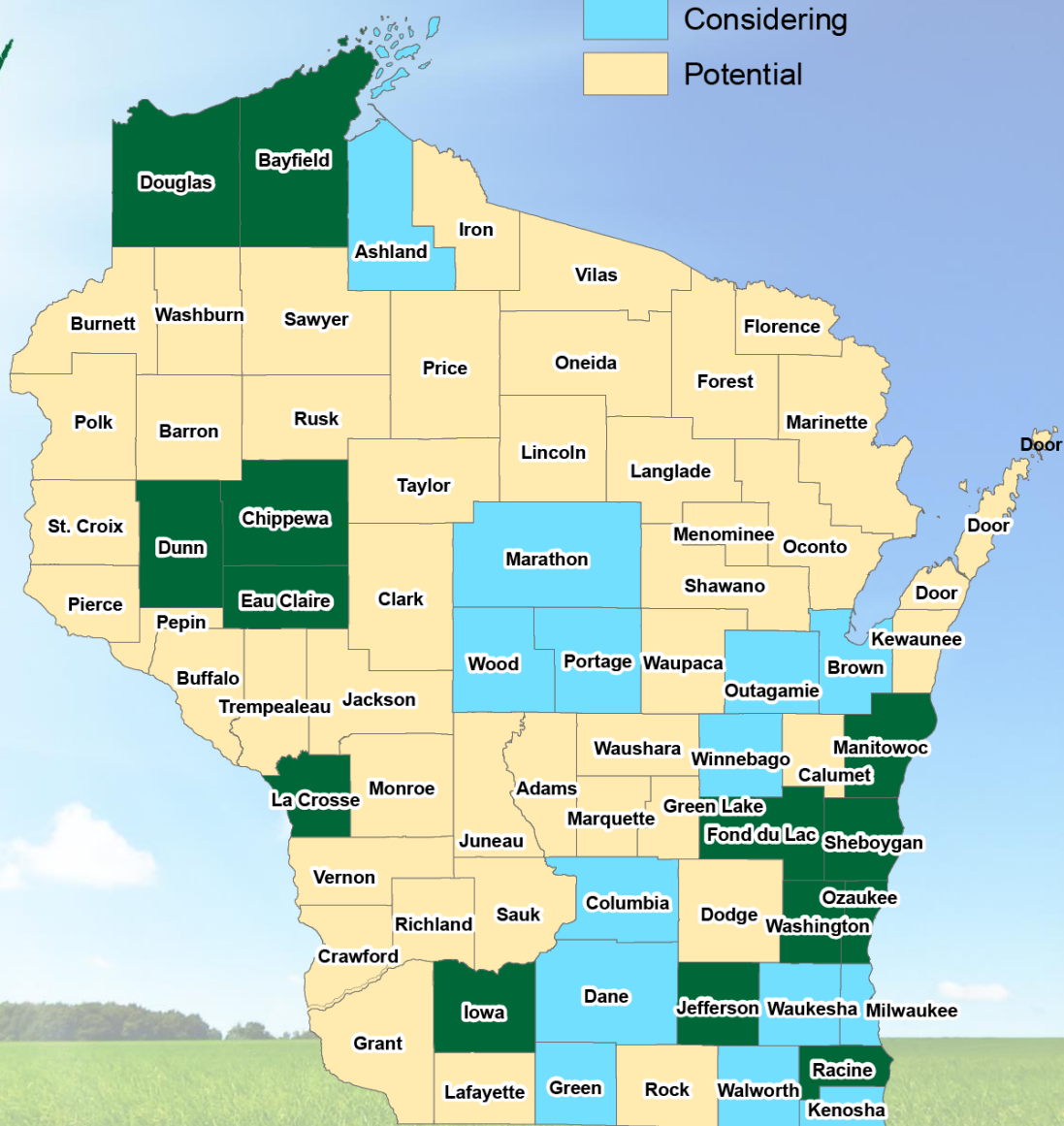
### Member Counties

- Bayfield
- Chippewa
- Douglas
- Dunn
- Eau Claire
- Fond du Lac
- Iowa
- Jefferson
- La Crosse
- Manitowoc
- Ozaukee
- Racine
- Sheboygan
- Washington



## WI PACE Commission Status

- Adopted
- Considering
- Potential





**No Cost** – PACE requires no credit exposure or general obligation funds from Member Counties.



**Statewide Approach** - uniform program, applied consistently, helps promote scalability by simplifying participation for stakeholders.



**Single Point of Access**– The 3rd party program administrator serves as the go-to contact for stakeholders who need program assistance. The administrator also ensures that projects comply with program requirements and certifies special charge repayment.



**Open Market** - qualified private lenders provide property owners competitive rates and financing terms. Any contractor or project developer can work on a qualified project.



**Lender Consent** – any existing mortgage lender(s) are required to provide consent to any PACE Loan.



## For More Information

### **von Briesen & Roper, s.c.**

Andy Phillips

414.287.1570

[aphillips@vonbriesen.com](mailto:aphillips@vonbriesen.com)

Andy Guzikowski

414.287.1438

[aguzikow@vonbriesen.com](mailto:aguzikow@vonbriesen.com)

### **Foley & Lardner, LLP**

Lynn Parins

608.258.4339

[lparins@foley.com](mailto:lparins@foley.com)

### **Wisconsin Counties Association**

Jon Hochkammer

866.404.2700

[hochkammer@wicounties.org](mailto:hochkammer@wicounties.org)

### **WECC EFS**

Jason Stringer

608.729.6854

[jstringer@weccusa.org](mailto:jstringer@weccusa.org)